



# Newport County Radio Club

August 11, 2025

Club Meeting

# Approval of July 14, 2025, Meeting Minutes



## Newport County Radio Club (NCRC) Meeting Minutes, 14 JUL 2025

**Attendees:** Jim Sendrak, Willy MacLean, Brian Cottle, Mike Rousseau, Dave Emond, Rene Martel, Rich Townson, Jay Nuzum, John Vecoli, Joe DeMarco, Keith Henry, Crystal Thibault, John Brewer, Ellen Vadney, Rob White, Paul Fredette, Alan Schwartz, Bruce Braga, Bill Bagwill, Bob Matose, Brian Cook, Bob Beatty, Scott Nacey, John Jackman, Ed Gosling, Bill Corbin, Bruce Manning (Z), Dave Quinn (Z), Nolan Byrne (Z), Chuck Kesson (Z), Mike Seil

**-Projector & Parish Hall WiFi Issues:** The screen projector used to display the prepared meeting slide deck was problematic and we were unable to utilize it during the meeting. In lieu of this the meeting was run from the floor by Club president Jim Sendrak.

In addition to the projector difficulties, the parish hall WiFi was inoperable and an iPhone HotSpot was used to support a Zoom link for remote meeting attendees.

**-New Members:** Jim Sendrak welcomed two new members to the Club. Both hail from Newport. Brian Cook, KC1EQB, has been licensed as a Technician for roughly ten years and is interested in becoming more active in the hobby. Alan Schwartz, WA1YDT, is a General class operator originally licensed in the late 80s. Alan, like Brian, is planning to become more active in the hobby and is looking to the Club to enhance knowledge and interest in amateur radio.

**-NCRC June Meeting Minutes:** A motion to approve the June meeting minutes was adopted.

**-POTA Instruction:** Willy MacLean, W1LY, is providing Parks-on-the Air (POTA) instruction to interested hams in the Club via hands-on park activations. This involves a plethora of how-to items from preparing a portable station with rig, power supply, antenna, logging method and perhaps a computer to establishing an account on the POTA website at;

<https://parksontheair.com/index.html>

From the POTA website one can view parks currently activated, spot themselves while at a park or when planning an activation and upload logs post-activation. This is a great way to enjoy ham radio and a day outdoors at a POTA park!

A schedule of Club POTA activations planned for the remainder of the year will be published on the Club website.

**-Treasurers' Report:** John Jackman, NCRC Treasurer, submitted his monthly report but this was unable to be scrutinized owing to projector issues. However, John's report is available for viewing on the W1SYE.org website.

John mentioned that the Club actually made money via donations from the Field Day Picnic. FB!!

John has prepared an updated membership roster that will be published, again on the Club website, based on annual dues received to date. We request that all members review their information on the roster to ensure all is correct.

**-Member Moments:** This is a new meeting segment where members are encouraged to bring to the fore items of interest to the Club at-large.

Jay Nuzum, N1CFY, asked if the Club is planning to have a table at the upcoming Northeast HamXposition, August 21<sup>st</sup> – 25<sup>th</sup> in Marlborough, Massachusetts. We have no plans at this time but Club members are encouraged to attend. There will be a flea market, major vendor booths and many interesting presentations, e.g. "Curiosity, Inclusiveness, and Mentoring Will Propel Amateur Radio Forward" by Thomas Witherspoon, K4SWL, "HAMSCI: Space Weather We Can Do Together", by Dr. Nathaniel Frissell, "Remote DXpeditioning" by Ned Stearns, AA7A and "Successful POTA" by Don Dickey, WV1W. More information at; <https://hamxposition.org/>

Bruce Manning reported on an unfortunate incident that points up the need for safety first in ham radio. A POTA operator was killed recently when his antenna kit touched a power line. The exact circumstances are not entirely clear as the ham was operating alone. But, suffice it to say that antennas should *never ever be erected near power lines!*

Scott Nacey, KK6IK, is a new member of the Club who participated at Field Day in the CW shack. He is a visitor to Rhode Island during the summer months and enjoyed the W1SYE FD experience. He was quite impressed with the entirety of our operation and we hope he can join us again next year.

It turns out that Scott has done quite a bit of portable operating, joining the W1SYE 2m net from second beach in Middletown and extensive DX ops in Europe. He talked a little bit about how to obtain a reciprocal agreement license via the European Conference of Postal and Telecommunications Administrations (CEPT). This agreement allows Advanced and Extra class US amateur license holders to operate in many European countries without the need for an individual license for each country. More information at;

<https://www.arri.org/cept>

Scott uses a collapsible whip similar to the HamGeek PAC-12 300W 5M/6.4FT purchased through AliExpress, currently listed under \$40.00, for portable ops.

**-Field Day HotWash:** The W1SYE 2025 Field Day HotWash will be published soon on the Club website. Important takeaways include the following;

>>> Better signage and community outreach

>>> FD ambassadors

>>> Fresh tear down crews

>>> Younger hands for setup/teardown

>>> Checklists for FD responsibilities, e.g. Station Manager checklist

>>> Plans for log/computer/rig collection post FD

Field Day photos at;

<https://w1sy.org/?m=202507>

KC1LPV Field Day Video at;

<https://www.youtube.com/watch?v=vtvbEMsGK70>

**-License Advancement Effort:** The Club is in the initial stages of talks with the principals at Ham Radio Prep, an organization that has developed curricula for all amateur license classes. Their fees are relatively modest and they guarantee individuals who participate will pass their exam(s) or their money back. More information via the W1SYE website as it becomes available. Also see;

<https://hamradioprep.com/>

**-Bob Beatty, WB4SON, Presentation, "Tech on HF – 10m FT8 Fun";** Presentation available for download (only) at;

[https://w1sy.org/?page\\_id=1538](https://w1sy.org/?page_id=1538)

# New Members



- KC1WZV Chris Carruba Portsmouth
- K1KLH Kim Hanna Tiverton

# Treasurer's Report



Newport County Radio Club Statements of Assets, Liabilities and Capital At July 31, 2025	
<b>Assets</b>	
Cash.....	9,187.81
PayPal.....	6,791.51
<b>Total Assets</b>	<u><u>15,979.32</u></u>
<b>Liabilities &amp; Capital</b>	
Liabilities.....	-
Club Equity.....	(15,979.32)
<b>Total Liabilities &amp; Capital</b>	<u><u>(15,979.32)</u></u>

Newport County Radio Club Change in Capital 1 Month Period Ending July 31, 2025	
Beginning Capital.....	16,677.20
Prior period adjustment.....	-
<b>Net Income (Loss).....</b>	<u><u>(697.88)</u></u>
<b>Ending Capital</b>	<u><u>15,979.32</u></u>

Newport County Radio Club Statement of Income 1 Month Period Ending July 31, 2025	
<b>Income</b>	
Grants.....	275.00
Dues.....	2,325.00
Donations.....	706.00
Education.....	243.00
Misc.....	-
<b>Total Income</b>	<u>3,549.00</u>
<b>Expenses</b>	
Grants.....	(215.00)
Paypal.....	-
Supplies.....	(1,674.88)
Education.....	(408.40)
Utilities.....	(1,575.76)
Insurance.....	(222.00)
Banking.....	(150.84)
<b>Total Expenses</b>	<u>(4,246.88)</u>
<b>Net Income (Loss)</b>	<u><u>(697.88)</u></u>

Newport County Radio Club Statement of Cash Flow 1 Month Period Ending July 31, 2025	
<b>Cash at January 1, 2025</b>	<b>16,677.20</b>
<b>Cash Inflows</b>	
Grants.....	275.00
Dues.....	2,325.00
Donations...	706.00
Education...	243.00
Misc.....	-
<b>Total Cash inflows</b>	<b>3,549.00</b>
<b>Cash Outflows</b>	
Grants.....	(215.00)
Paypal.....	-
Supplies.....	(1,674.88)
Education...	(408.40)
Utilities.....	(1,575.76)
Insurance...	(222.00)
Banking.....	(150.84)
<b>Total Cash Outflows</b>	<u><b>(4,246.88)</b></u>
<b>Cash at July 31, 2025</b>	<u><b>15,979.32</b></u>
Notes:	
Unrestricted cash	\$11,202.96
Restricted ARRL Grant	\$2,962.31
Restricted Pete Lawson Fund	\$1,423.90
Restricted IBM Grant	\$390.15



# Parks on the Air



Date	Leader(s)	Call(s)	Park
Sunday, July 20, 2025	Willie Maclean	W1LY	US-2876 Goddard Park
Sunday, July 27, 2025	Jim Sammons & John Mills	KA1ZOU & K1JSM	US-10548 Barber Pond
Sunday, August 3, 2025	Jim Sammons	KA1ZOU	US-2875 Ft. Wetherill
Sunday, August 10, 2025	Jim Sammons & John Mills	KA1ZOU K1JSM	US-2868 Bever Tail





## Parks on the Air



- Other days of the week – Other times?
- From: JOHN MILLS  
Subject: Re: POTA Discussions

*“How about starting a POTA Club, a club within a club. Members would sign up.  
Monthly meetings at a large POTA site with BYO lunch. Ops start at 0930, end at noon with a party and hot wash.*

*I can do August 17, 24 or 31.  
I’ll bring wine & cheese for all.*

73, John, K1JSM”

# Pete Lawson Outdoor Adventure

Sunday, September 7<sup>th</sup> , 2025



## Activities Ideas

- Casual POTA – Prize Drawings
  - We'll have one or more live stations at the event
  - Make live contact, get a ticket – ticket goes into drawing for prizes!



# Pete Lawson Outdoor Adventure

Sunday, September 7<sup>th</sup> , 2025



## Activities Ideas

- Gear swap/sell – Invite members to bring used gear
- Member Desert Bake Off – Invite members to bring home made deserts
- Other?

Registration site to go live this week





 [Courses](#) [Guides & Info](#) [Pricing](#) [Shop](#) [Login](#) [Sign Up](#)

Excellent  1,232 reviews on  Trustpilot

# Ham Radio Online License Classes

The Ham Radio Prep program makes it fast, easy and fun to get your license in just a few hours of study time. Pass your exam on your first try or your money back, *guaranteed!*

[Try a Free Lesson](#) [Sign Up Now](#)



[< Go to Dashboard](#)

## Extra Class 2024-2028

0% complete

Search by lesson title

Introduction (read before studying) 0/3 ^

Intro Video

VIDEO · 4 MIN

Read this Before Studying

TEXT

Disclosure

TEXT

Lesson 1: Operating 0/3 v

### Intro Video



COMPLETE & CONTINUE →



# HAM RADIO PREP



Level 1

## Technician License Course

**\$35**

- ✓ Level 1: Technician License Course only
- ✓ Questions Always Up To Date
- ✓ Step-by-Step Lessons
- ✓ Learning Games
- ✓ Videos
- ✓ Study on any Device
- ✓ Unlimited Practice Exams

[Enroll Now](#)

One-time fee, lifetime access.



Level 1 + Level 2

## Technician + General License Course

~~\$70~~ **\$55**

- ✓ Includes Both Full Courses:
- ✓ Technician License Course
- ✓ General License Course
- ✓ Learning Games
- ✓ Videos
- ✓ Study on any Device
- ✓ Unlimited Practice Exams

**Save 20%**

[Enroll Now](#)

One-time fee, lifetime access.



DISCOUNTED

Level 1 + Level 2 + Level 3

## All Access Pass

~~\$199~~ **\$79**

- ✓ Includes all 3 license courses:
- ✓ Technician License Course
- ✓ General License Course
- ✓ Amateur Extra License Course
- ✓ **Free Bonus: Learn to use your radio with Ham Radio Basics Course - Limited time only!**
- ✓ VIP Student Support

**Save 60%**

[Enroll Now](#)

One-time fee, lifetime access.

**PLUS – When you sign up, enter coupon code W1SYE and get another 10% discount!**

**Lifetime Course Access with No Hidden Fees.**

Go into test day confident knowing you're backed up by the [Ham Radio Prep Guarantee](#).



# Welcome to the World Radio League!



Search Callsign or Name



KC1LYG

FREE

August 11, 2025 | 15:2

Band Conditions

View Band Plan

Quick Links :

Start POTA Activation

New General Logbook

Import ADIF

View Contests

- Home
- My Profile
- Logbooks
- Analytics
- Activities
- Spotting
- Leaderboard
- Contest
- Integrations
- Community Chat
- Become a Member
- Find Members Near Me
- Report a Bug
- Send Feedback
- Log out

## World Radio League

Log your ham contacts, win awards, and chat with other operators with the most advanced logbook on the planet.



### MOST RECENT CONTACTS

View all

From	To	Band	Mode	Distance	
K04SCT	KC9HEQ	20	SSB	319.9 mi	
KD3BJJ	KY4HV	20	SSB	732.7 mi	
NP3K	WP3C	20	SSB	1,241.2 mi	
K04SCT	KY4HV	20	SSB	344.8 mi	
KD3BJJ	K5HEP	20	SSB	1,408.5 mi	

View Recent



# MEMBER DISCUSSIONS



# HamX - The Northeast HamXposition

August 21-24, 2025



Best Western Royal Plaza Hotel & Trade Center, 181 Boston Post Road W, Marlborough, Massachusetts

- Buy [tickets](#)
- Book my [hotel room](#)
- Reserve [flea market](#) or [vendor booth](#)
- Sign up to [volunteer](#)
- Register for [mini Contest University](#)
- Register for [W1AW tour](#)
- Register for [Tech In A Day](#)
- View the [On-line Schedule](#) or [Downloadable PDF](#)

SCHEDULE	Thursday August 21	Friday August 22	Saturday August 23	Sunday August 24
<a href="#">Comedy Kickoff</a>	8-9:30 PM	—	—	—
<a href="#">New England QRP</a>	—	9 AM-9 PM+	6:30 AM-10 PM+	6:30 AM-2 PM+
<a href="#">W1AW Tour</a>	—	10 AM-4 PM	—	—
<a href="#">mini Contest University</a>	—	8:30 AM-5 PM	—	—
<a href="#">Club Track</a>	—	12:30 PM-5 PM	—	—
<a href="#">Contest / DX Banquet</a>	—	7-9:30 PM	—	—
<a href="#">Grand Banquet</a>	—	—	7-9:30 PM	—
<a href="#">Presentations</a>	—	12-5 PM	9 AM-5 PM	9 AM-1 PM
<a href="#">Flea Market</a>	—	12-5 PM	9 AM-5 PM	9 AM-1 PM
<a href="#">Exhibit Hall</a>	—	—	9 AM-5 PM	9 AM-1 PM
<a href="#">Prize Drawing</a>	—	—	—	1-2 PM

Major Sponsor:





# Epson EX9240

$\$649.99 + \$41.27 = \$691.26$





# Epson EX9240

~~\$649.99 + \$41.27 = \$691.26~~

**PA (\$172.82) = \$518.44**





# An Update: Community Radio Lifeline for Newport County

August 2025

[www.gen4AI.org](http://www.gen4AI.org)



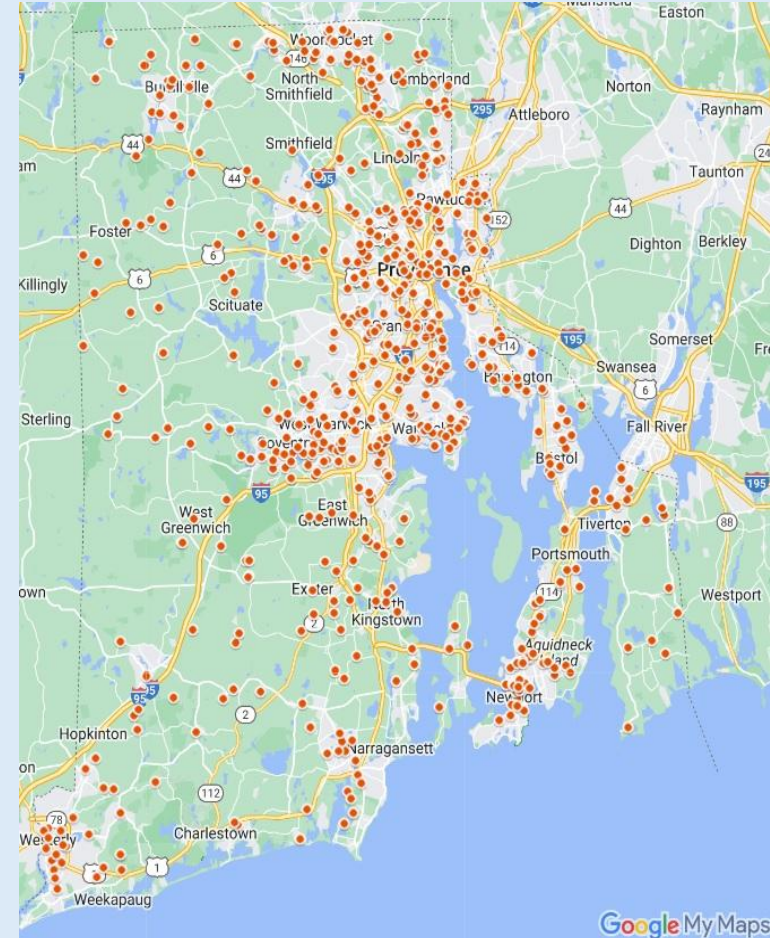
# Bottom Line Up Front

- Using UHF - especially FRS
- Public meetings each month attract 8-12 people
- Gave 40 FRS radios to cyber camp students
- Growing relationships with Newport Fire Dept
- Univ of RI research project is studying capability
- Held county-wide radio drill - Saturday, 4 August
- Integration with EMAs - still a work in progress



# Family and General Mobile Radio Service

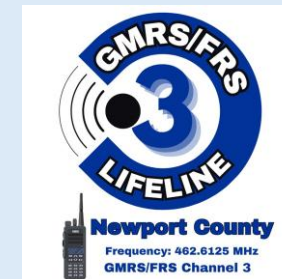
- Current GMRS Licenses
  - 830 in Rhode Island
  - 50+ on Aquidneck Island
- 15 new families/month



# Community Lifeline Emergency Radio Network



- CCRI-Newport cyber security camp students using FRS radios
- 40 radios distributed



# Community Lifeline Emergency Radio Network



- Newport Deputy EMA - Capt Allan Gray – now has GMRS license and radio



# Community Lifeline Emergency Radio Network



- New Rogers High School building is directly opposite Newport FD Station 2
- Possible site for future GMRS repeater



# Community Lifeline Emergency Radio Network

- University of Rhode Island research project working with Newport FD
- “No-Notice Bi-Directional Emergency Communications”
- Interested in upcoming Sept dams + drones exercise with Portsmouth EMA

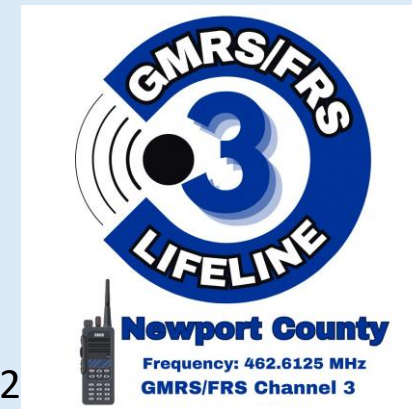


# Community Lifeline Emergency Radio Network



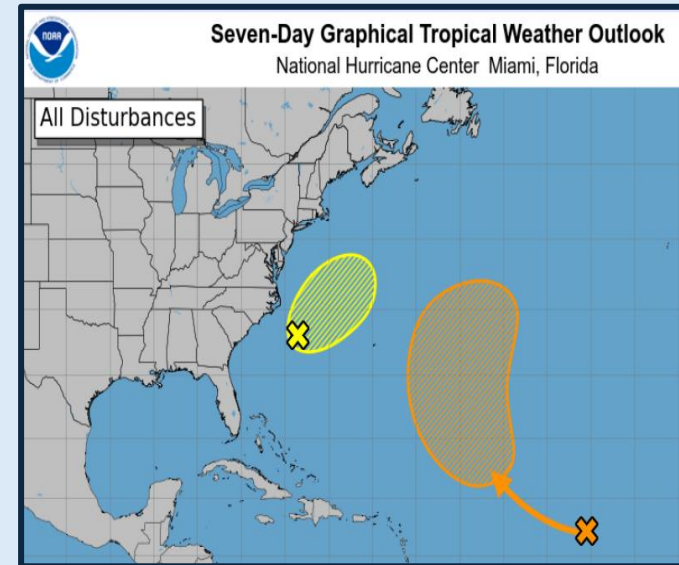
- Recent RI ARES - RIEMA Drill
- FRS/GMRS/Ham 2M FM + Winlink ops from Newport FD Station 2

[www.gen4AI.org](http://www.gen4AI.org)



# Community Lifeline Emergency Radio Network

- Many NCRC members have a GMRS family license
- Just \$35 for 10 years –  
Covers an entire family & many relatives
- Be the one who helps your neighborhood

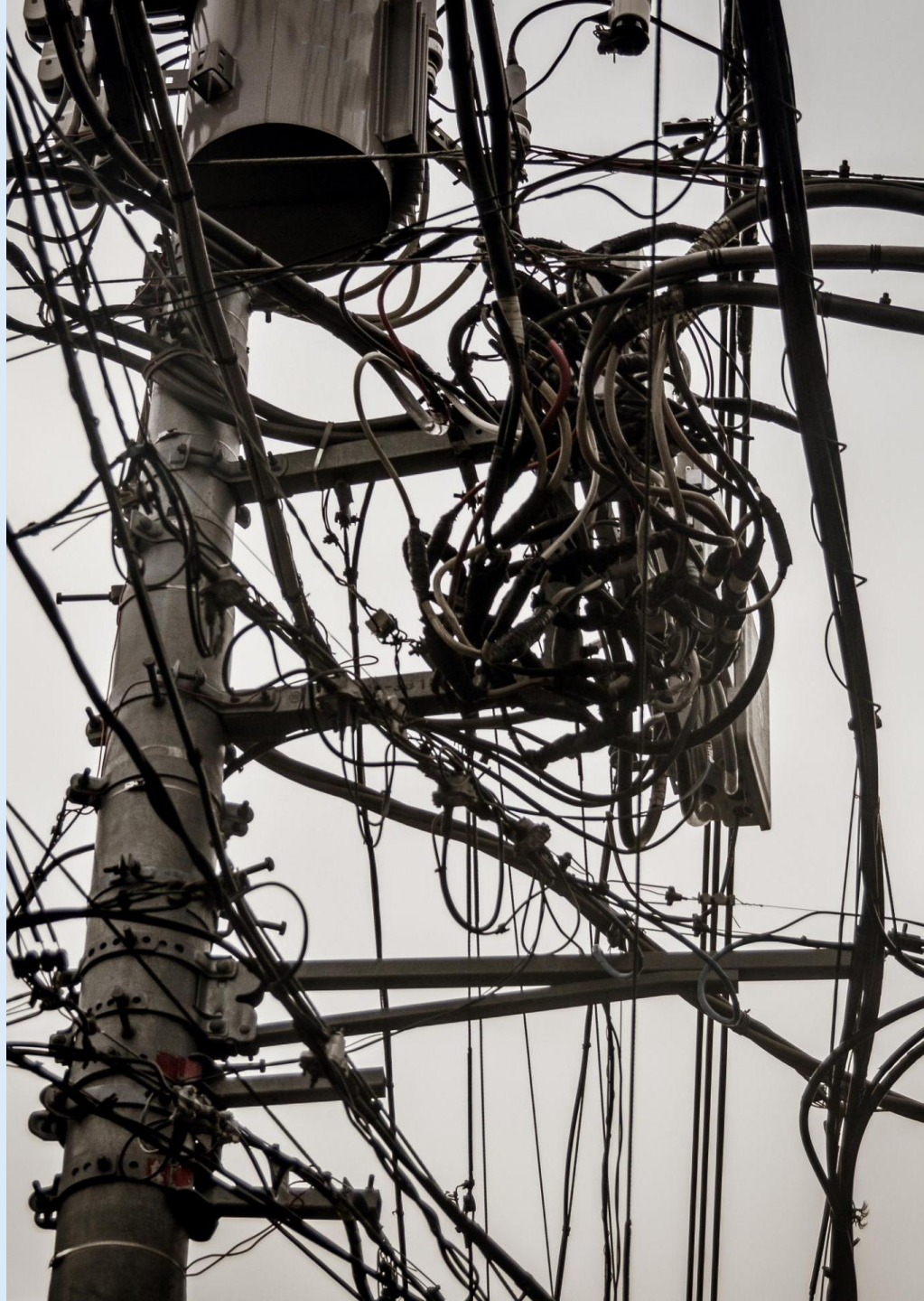


# RESILIENT COMMUNICATIONS

## MORE TOOLS FOR THE HAM TOOLBOX



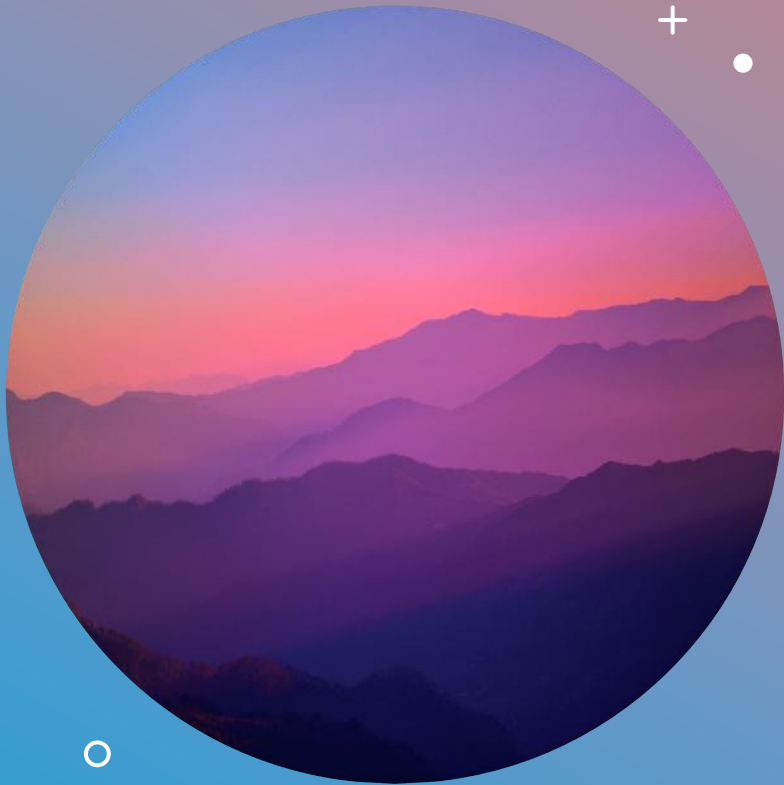
Newport County Radio Club  
August 11, 2025  
Bob WB4SON



# RESILIENCY

- Traditional communication infrastructure is prone to damage from natural disasters and accidents, leading to service interruptions
- Storms can and do take out the internet, phones, power, etc.
- Our bay is beautiful but can create vulnerabilities such as flooding and even nautical accidents

As Radio Amateurs, we are already part of the resiliency solution, but some non-ham tools can add to our capabilities



# AGENDA

Starlink Internet Service

Winlink Email

# WHAT IS STARLINK?

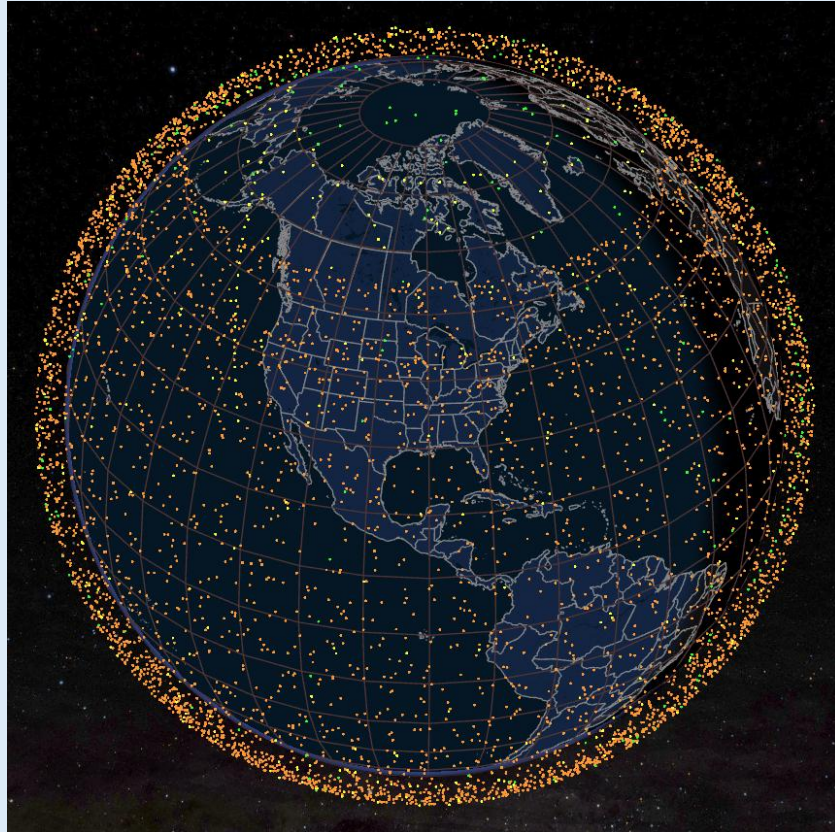
- Commercial satellite-based internet (2019)
- Over 8000 satellites in orbit, growing at a rate of 2,300+ a year => 42,000 goal
- Each satellite orbits about 350 miles above the earth, weighs a bit under a ton, and has a fuel lifespan of about 5 years
- There are over 6 million subscribers today (adding about 2.5 million per year)
- Peak speeds: 475Mbps down/75Mbps up, Average: 105Mbps down/15Mbps up



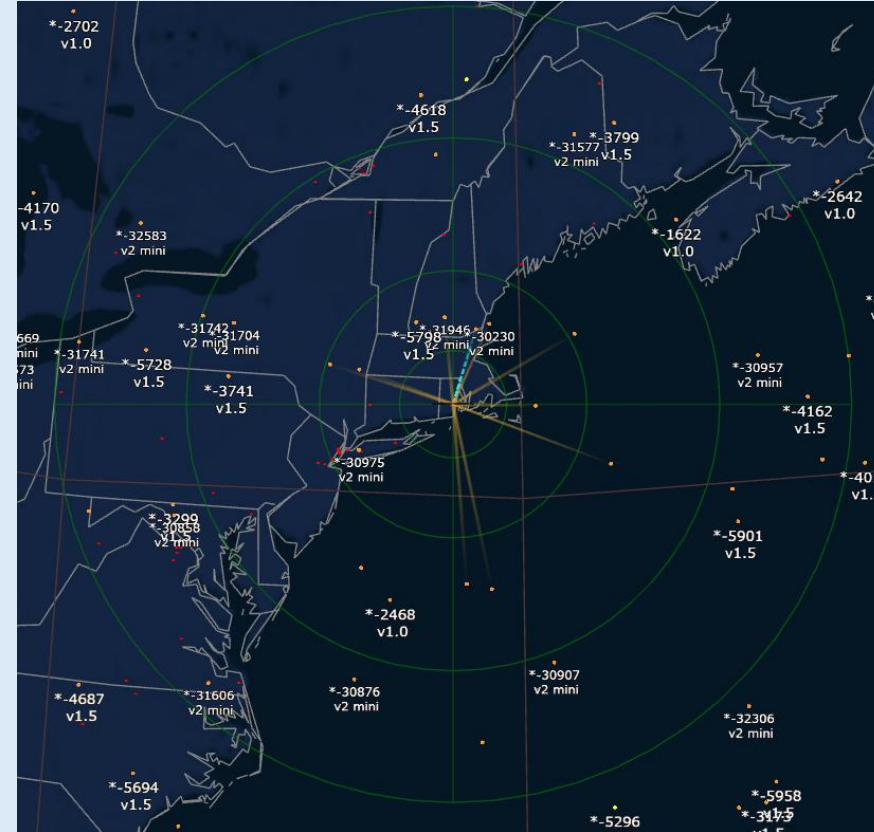
+

o

# All those satellites!!



Starlink in Orbit around Earth



23 Satellites above my house

Residential antennas are larger and intended for fixed installations.

- 24"x15" weighing 6.5 pounds
- Needs 65 watts average (100 watts peak when melting snow)
- Costs about \$99 for the hardware and plans vary from \$80/\$120 a month

Roaming systems are much smaller/lighter and can be used anywhere

- 12x10" weighing 2.5 pounds
- Needs about 30 watts average (Peak of 60 watts if melting snow).
- Cost \$300 for hardware and \$10/month (10GB/Month) up to \$165 unlimited
- Router is built into the antenna!!

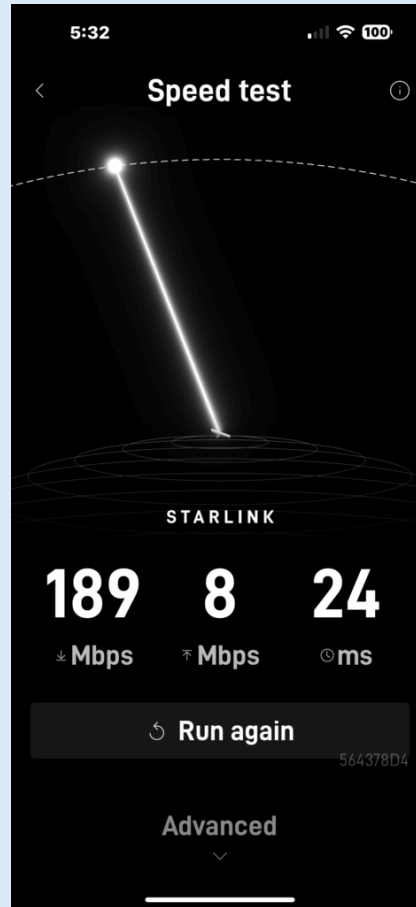
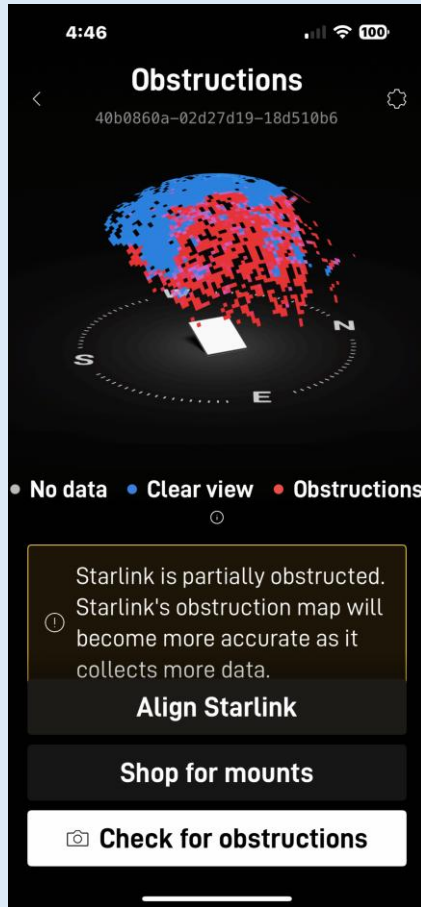


## RESIDENTIAL

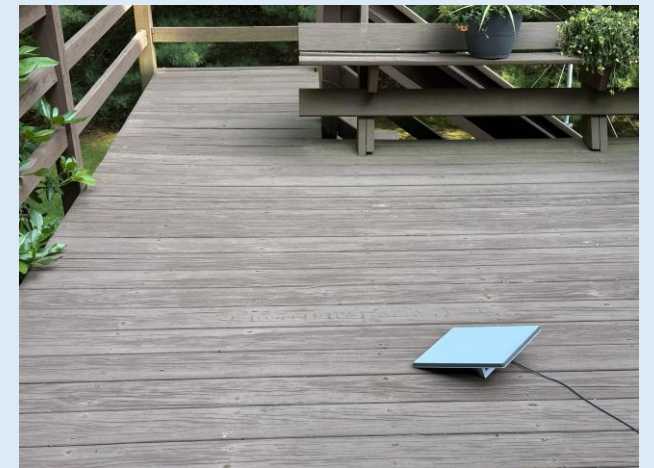


## ROAMING

# Real Life Experience



150' trees everywhere but up



Starlink Mini on deck



**WINLINK**

Winlink is an Email system first used in the 1980s by blue-sea boaters. It really took off around 2000 as it was adopted for Public Safety

Just like traditional email systems...

- You can send and receive messages
- You can have attachments (120KB limit)
- You can run the Winlink Express email client on your Windows PC

**BUT – No Public Internet Connection is required!!!**

In addition to a regular internet connection, you can use HF and VHF/UHF Radio Connections



# Why Use Winlink??

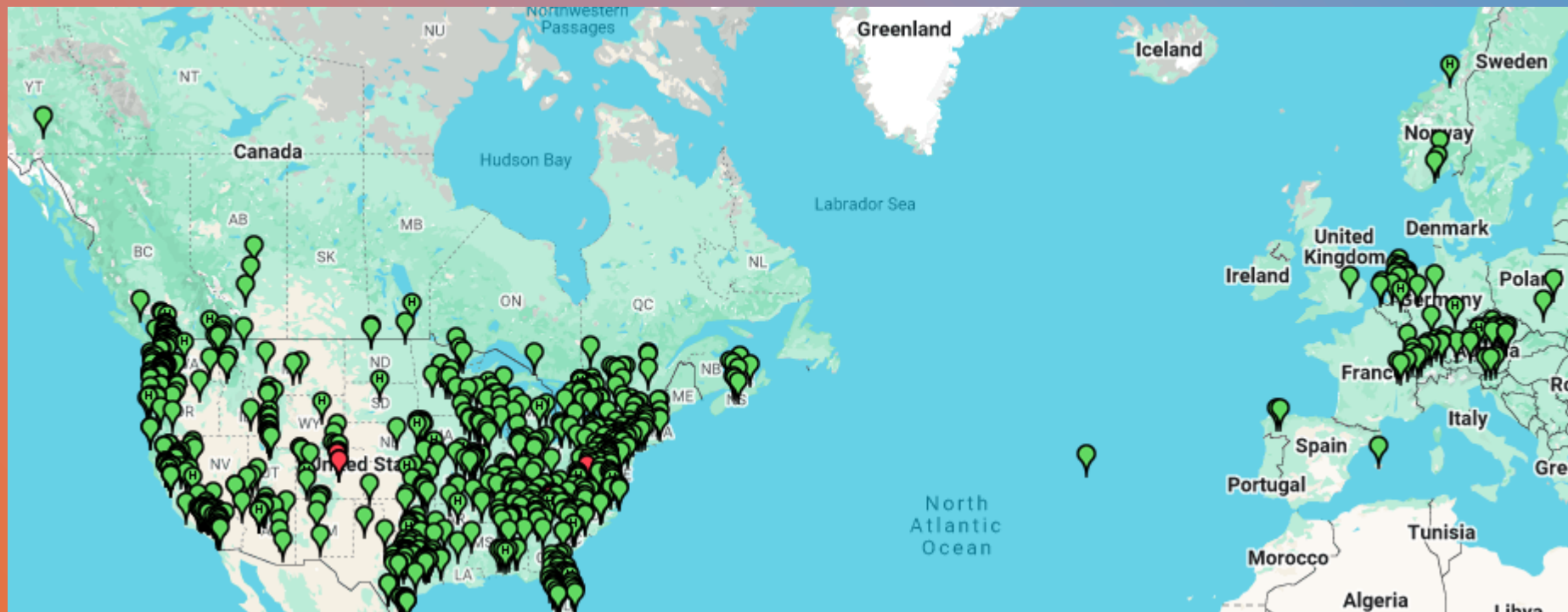


- Think of a disaster like a hurricane – Cell phones, internet, and power are impacted
- The area where communications have been disrupted is the “Donut Hole”. This might be tens or hundreds of square miles
- Surrounding that hole is where all the good stuff is still working, like the public internet
- Winlink RF is used to communicate outside of the Donut hole

Best reason of all: Wildly adopted messaging standard!!

# How popular??

- 4,200+ gateways on the air 24x7
- Tens of thousands of users
- 100,000 messages a month



# A FAIRLY TYPICAL WINLINK STATION



- Windows Computer
- VHF or HF Radio, Power Supply, Antenna
- Radio to Computer Interface
  - Audio In & Out for RX and TX
  - PTT Control

Alinco VHF and DRA-50 shown

# Typical Radio to Computer Interfaces

- Signalink – about \$120 to \$150 with radio cable



- DRA-50 – about \$125 with cables (DIN)



- Built-in like IC-7300 and IC-9700

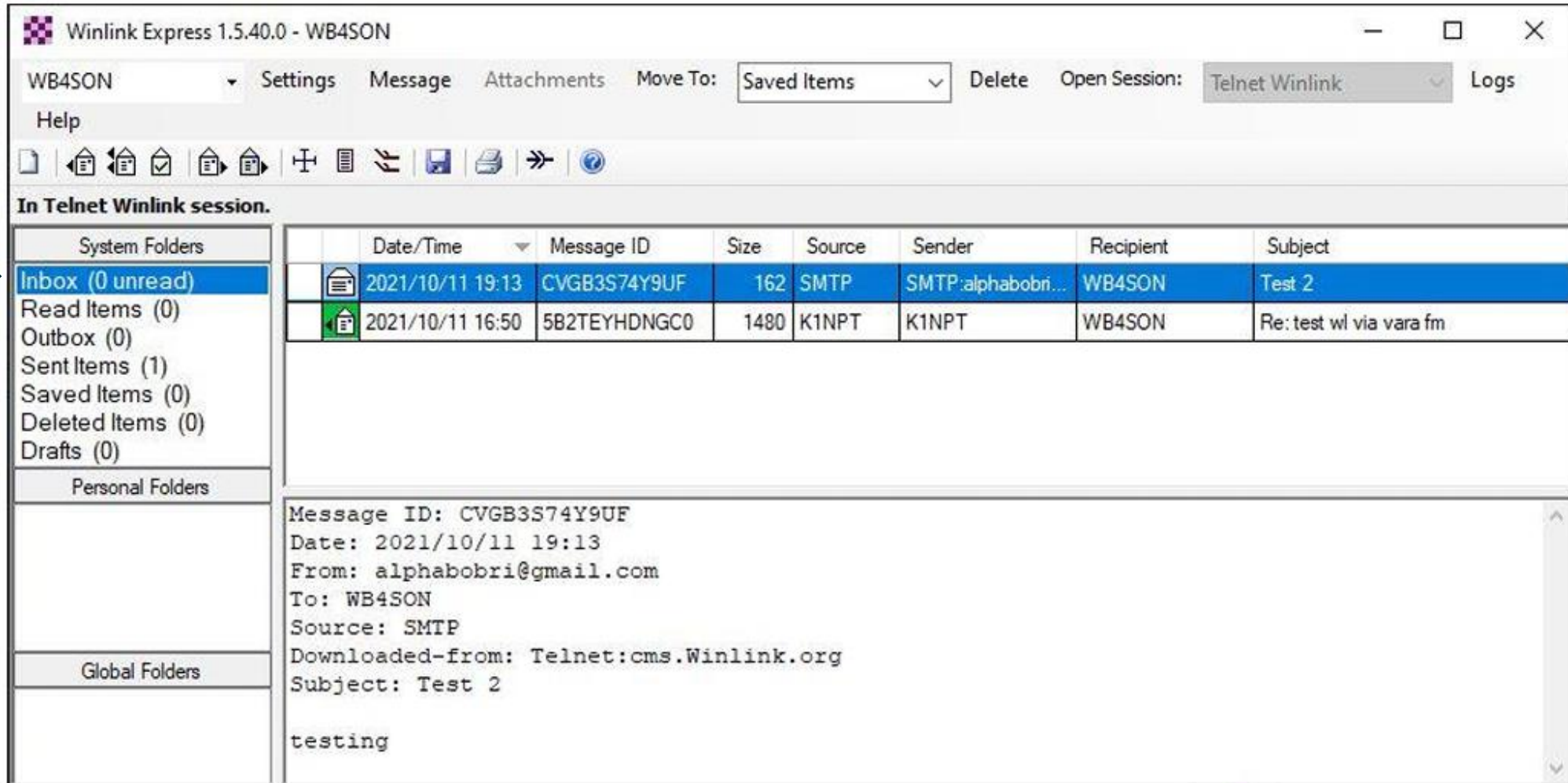


# Install and Register Winlink



- Go to Winlink.org
- Registration will require your call sign information and mailing address
- Winlink is free but you are encouraged to donate \$25, which gets you a registration key
- Your call sign becomes your Winlink address like [WB4SON@winlink.org](mailto:WB4SON@winlink.org)
- Install RMS Express (Winlink Software) – slow speed VARA modem is included
- You might consider registering VARA FM/HF for \$70

# What does RMS Express look like?



Winlink Express 1.5.40.0 - WB4SON

WB4SON Settings Message Attachments Move To: Saved Items Delete Open Session: Telnet Winlink Logs

Help

In Telnet Winlink session.

System Folders	Date/Time	Message ID	Size	Source	Sender	Recipient	Subject
<b>Inbox (0 unread)</b>	2021/10/11 19:13	CVGB3S74Y9UF	162	SMTP	SMTP:alphabobri...	WB4SON	Test 2
Read Items (0)	2021/10/11 16:50	5B2TEYHDNGC0	1480	K1NPT	K1NPT	WB4SON	Re: test wl via vara fm
Outbox (0)							
Sent Items (1)							
Saved Items (0)							
Deleted Items (0)							
Drafts (0)							

Personal Folders

Global Folders

Message ID: CVGB3S74Y9UF  
Date: 2021/10/11 19:13  
From: alphabobri@gmail.com  
To: WB4SON  
Source: SMTP  
Downloaded-from: Telnet:cms.Winlink.org  
Subject: Test 2

testing

- Starlink Website: <https://www.starlink.com/>
- Realtime Map: <https://satellitemap.space/>
- Fun facts: <https://www.space.com/spacex-starlink-satellites.html>
- Starlink & Ham Radio: [https://www.youtube.com/live/o1j45Sj\\_4BQ](https://www.youtube.com/live/o1j45Sj_4BQ)
  
- Winlink Website: <https://winlink.org/>
- VARA FM & HF: <https://rosmodem.wordpress.com/>
- Set up for IC-7300:  
<https://www.youtube.com/watch?app=desktop&v=ijxkqvqkOyw&t=0s>
- DRA-50 Radio interface:  
<https://masterscommunications.com/products/radio-adapter/dra/dra50m.html>
- Winlink Thursday Drills: [https://emcomm-training.org/Winlink\\_Thursdays.html](https://emcomm-training.org/Winlink_Thursdays.html)
- Winlink Basics: [Winlink Basics for PART – wg1v.org](http://Winlink Basics for PART – wg1v.org)

# REFERENCES